

PVC-U
PANEL DOORS

the perfect finish



eurocell

PVC-U *panel doors*

CONTENTS

DISCOVER

Victorian	4-5
Windsor	6-7
Georgian 1	8
Georgian 3	9
Monaco	10
Devon	11
Jacobean	12
Cornwall	13
Edwardian 2 & 4	14
Bordeaux & Quebec	15
Warwick	16
Cambridge	17
Back Door	18

AMATIS COLLECTION

York & Toulouse.....	19
Xanthi & Verona	20
Side panels	21

DESIGN CHOICES

Colours	22
Glazing options	22
Hardware options.....	23

When you buy a PVC-U infill panel for your front door, you can rest assured you are investing in a quality product. PVC-U doors are low maintenance and secure.

Every door is available in white or woodgrain effects, Rosewood, Light Oak, Mahogany or Irish Oak. All woodgrain options are finely crafted to look realistic, but unlike wood they are guaranteed not to crack, peel or fade; so you can create the warmth that wood offers, without the hassle. There is also a new range of foiled colours such as the popular Anthracite Grey and Chartwell Green. You can also combine white and woodgrain finishes, so for example, you could have woodgrain on the outside to match the exterior features of your home, and white on the inside providing you with a neutral finish for your interior.

All glass is toughened (kite mark bs6206) and all door panels meet class 1 surface spread of flame classification BS476 part 7. Due to the nature of the product, no liability can be accepted for the accuracy of colours or designs shown which are intended for guidance only. All the door panels in this range comprise of two PVC-U skins, pressure bonded to a core material of E.H.D.F.R. A polystyrene (extra high density fire retardant additive) using a specially formulated adhesive that is both heat and moisture resistant. The result is a core free from CFCs and a skin that is approved to BS476:part12 'Method of Test for Ignitability of Products by Direct Flame Impingement'. This offers a high degree of thermal efficiency and, by using our range of reinforcing options, a high degree of security.

VICTORIAN



Victorian
with Cobalt Glass (BP) ▲



Victorian
in Chartwell Green with Rennie Argyle Glass (CD)



Victorian
with Fused Grille Glass (DB)



Victorian
with Tinted Emerald Glass (DB)



Victorian
with DB1 Glass (DB)



Victorian
with Ruby Glass (BP)



Victorian
with Silver Grille Glass (DB)



Victorian
with Georgian Bar Glass



Victorian
with Glazed Glass



Victorian
Solid



Victorian
with Briar Glass (CD) and Matching Side Panel



Victorian
with Glazed Glass and Side Panel

WINDSOR



Windsor
in Anthracite Grey with DB4 Glass



Windsor
with Bevel Cluster Glass (DB)



Windsor
with Sapphire Twist Glass (DB)



Windsor
with Diamond Lead Glass



Windsor
with Glazed Glass



Windsor
Solid



Windsor
with Emerald Jewel Glass (DB)



Windsor
with CL5 Glass



Windsor
with Climbing Rose Glass (CD)



Windsor
with Floral Urn Etched Glass (TD)



Windsor
in Black with Atria Glass (DB)



GEORGIAN 1



GEORGIAN 3



MONACO



Monaco
in Chartwell Green with Bevel Cluster Glass (DB)



Monaco
with DB1 Glass (DB) ▲



Monaco
with Climbing Rose Glass (CD)



Monaco
with Atria Glass (DB)



Monaco
with BP5 Green Glass



Monaco
with Glazed Glass

DEVON



Devon
with Fused Blue Glass (DB)



Devon
with Neptune Glass (BP)



Devon
with Wild Rose Glass (CD)



Devon
with Floral Jewel Glass (BP)



Devon
in Light Oak with Venus Glass (BP)



Devon
in Light Oak with Venus Glass (BP)



JACOBEOAN



Jacobean
in Anthracite Grey with Silver Grille Glass (DB)



Jacobean
with Bevel A Glass (DB)



Jacobean
with CL2 Glass



Jacobean
with Rennie Moray Glass (CD)



Jacobean
with Bevel F Coloured Glass



Jacobean
with Glazed Glass

CORNWALL



Cornwall
with CD9 Glass



Cornwall
with Blue Border Glass (CD)



Cornwall
with Glazed Glass



Cornwall
Solid



Cornwall
in Chartwell Green with Bullion Glass (CD)



Cornwall
with DB68 Glass

EDWARDIAN 2 & 4



Edwardian 4
in Cream with Bevel G Glass (DB)



Edwardian 4
with Climbing Rose Glass (CD)

Edwardian 4
with DBI Glass

Edwardian 2
with Glazed Glass

Edwardian
Solid

BORDEAUX & QUEBEC



Bordeaux
with CL2 Glass



Quebec
with CD21 Glass



Quebec
with CD30 Glass



Quebec
with Georgian Bar Glass



Bordeaux
in Anthracite Grey with BP1 Glass ▲



Quebec
with DB1 Glass



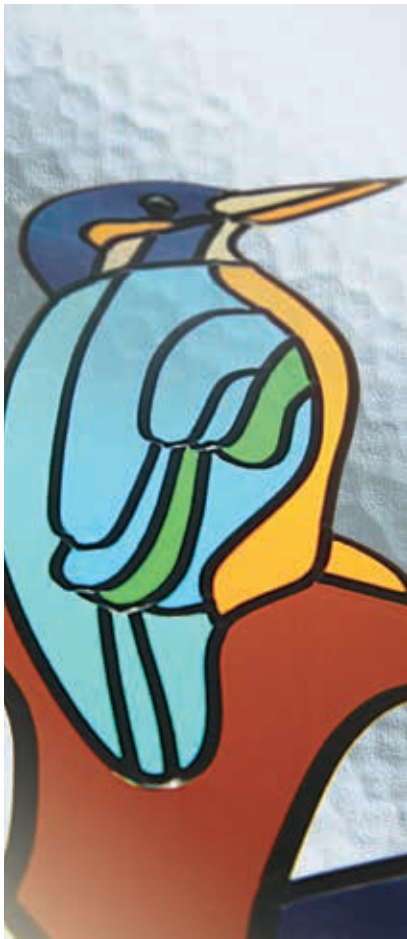
WARWICK



Warwick
in Chartwell Green with Aquarius Glass



Warwick
with CD21 Glass



Warwick
with House No/Roses Glass (CD)



Warwick
with CD33 Glass



Warwick
with Diamond Lead Glass



Warwick
with Glazed Glass

CAMBRIDGE



Cambridge
with Fused Blue Glass (DB)



Cambridge
with Aqua Petal Glass (DB)



Cambridge
with Aqua Jewel Glass (DB)



Cambridge
with Block Lead Glass



Cambridge
in Irish Oak with DB1 Glass



Cambridge
with Bevel Cluster Glass (DB)

BACK DOOR



Back Door
with Glazed Glass



Back Door
with Georgian Bar Glass



Back Door
with CD21 Glass



Back Door
with Square Lead Glass



Back Door
with Diamond Lead Glass



Back Door
Solid

Amatis *collection*

Stylish inverse moulding is the latest feature to be introduced to the PVC-U panel door and has proved to be popular with home owners, which is why we have extended our range to provide you with even more styles to choose from.

On most PVC-U doors, the mouldings are raised from the door. However, with the Amatis inverse collection, the mouldings recess into the door. This creates a more elegant, slimline look that resembles the traditional carved lines of timber, but still has the low maintenance benefits of PVC-U so you get the best of both worlds.

YORK & TOULOUSE Amatis PVC-U Panel Doors



York
in Chartwell Green with CL4 Glass



Toulouse 3
with CL4 Glass



York
with D84 Glass



York
with Glazed Glass



Toulouse 1
with CD12 Glass



Toulouse 1
with Georgian Bar Glass

XANTHI & VERONA Amatis PVC-U Panel Doors



Xanthi
with Glazed Glass

Verona
with CD50 Glass

Verona
with CL1 Glass

Verona
Solid



Xanthi
in Light Oak with CL4 Glass



Verona
with BP11 Glass

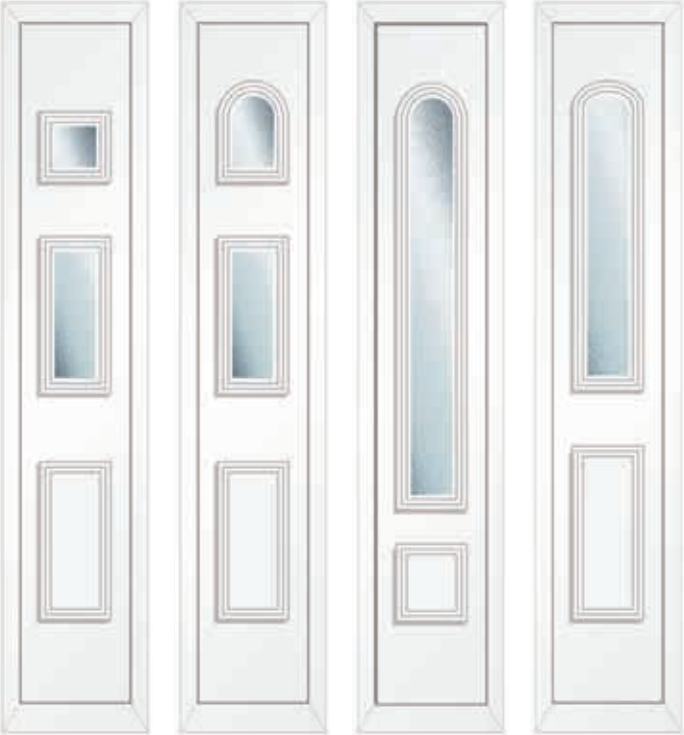
SIDE PANELS Amatis PVC-U Panel Doors



Victorian



Half, quarter and conservatory panels are also available



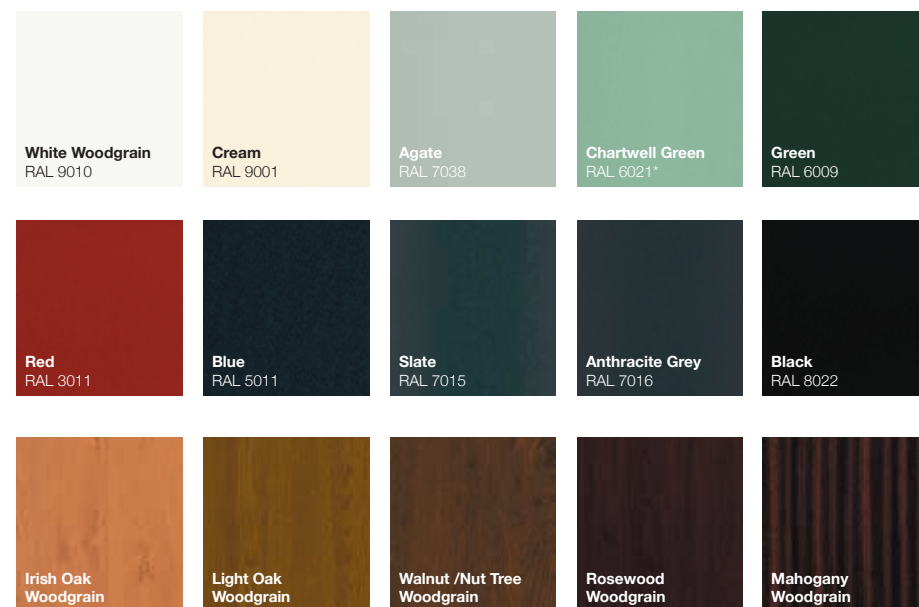
Edwardian

Georgian

Cambridge

Bordeaux

DESIGN CHOICES



*Nearest match. RAL numbers are given in good faith but are for reference only we take no responsibility for other materials not matching our finish.

GLAZING OPTIONS



Resin Bevel(BP) - No backing glass option available. ▲

Using the most advanced technology, this range of resin bevel effect designs has been introduced to complement our existing wide range of glass patterns. Each design is carefully sealed between two panes of glass for ease of cleaning. The glass will not shatter like ordinary door glass but will hold together even if broken. This reduces outside noise pollution. Each resin is obscure and the design will occasionally produce minor imperfections that are generally regarded as acceptable. The resin is glazed on the inside piece of glass facing outwards.

Bevelled Glass(DB)

Traditional handcrafted and bonded to the glass with an optically clear resin then overlaid with lead. These classic and timeless designs will complement that period home.

Stained Units (CD) (CI)

Combining traditional leadwork with coloured film, these designs replicate that stained glass appearance. All stained units are individually handmade and the coloured film may at times, vary slightly from the computer generated brochure.

Sandblasted / Etched Glass (TD) (DB)

This handcrafted glass is now produced using modern technology and is designed to give a traditional appearance. For a more dramatic effect, this is often combined with striking glass bevels. Though generally obscure, it does leave various areas clear.

Silver Grille (DB)

Our Silver Grille options feature attractive traditional motifs that are created using a highly polished chrome framework that is sealed within the double glazed units. Each Silver Grille design is available with a choice of backing glass.

TOP TIPS

Clean your door about every four months with a non-abrasive cleaner to remove any grime and atmospheric deposits.

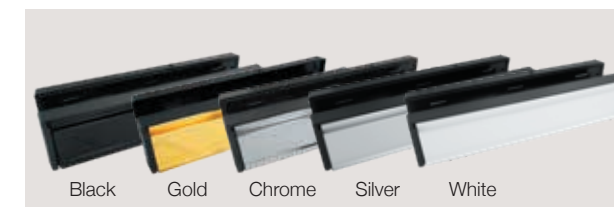
To clean your glass, use a soft cloth with soap and water. Avoid excessive pressure when cleaning leaded glass.

Lubricate locks and hardware as required using a light machine oil such as W040. This will ensure your door continues to function smoothly and quietly.

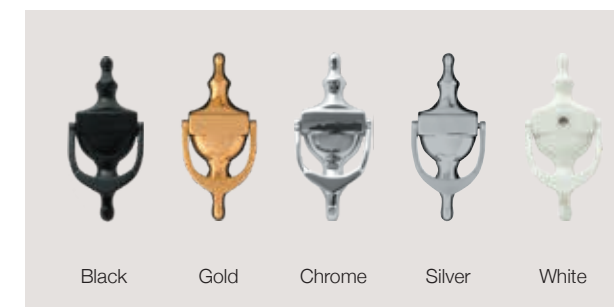
Hardware

options

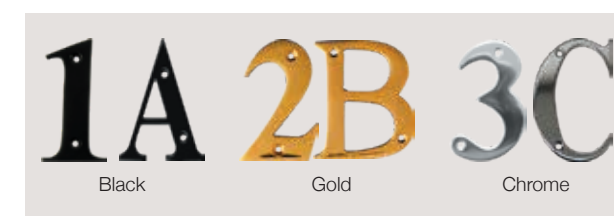
//LETTERPLATES



//URNS



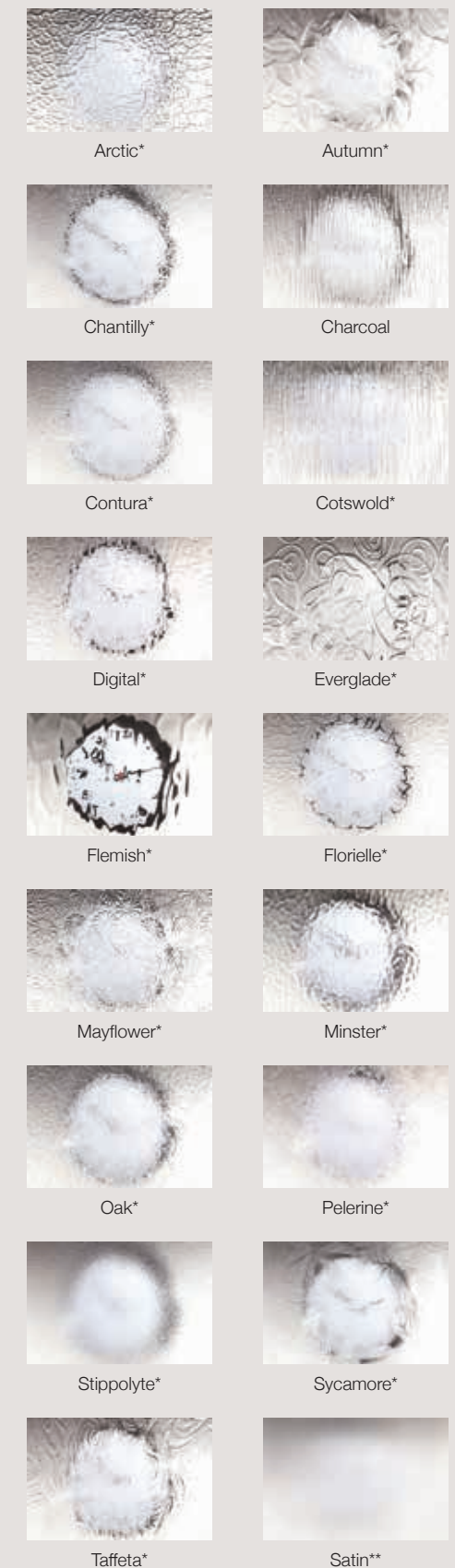
//NUMBERS AND LETTERS (A-D Only)



//SPYHOLES



//TEXTURED GLASS OPTIONS



* Glass names are the trademark of Pilkington plc. and reproduced by courtesy.

** Satin Glass incurs a surcharge.



eurocell.co.uk



**MADE & RECYCLED
IN THE UK**

eurocell

Product specification is subject to change without notification.
Please also note that colours shown are illustrative only, as the printing
process does not allow 100% accurate colours to be reproduced.

VSTPANEL | EU00770 Is2/Jun24